



International Air Cargo Terminal Co.,Ltd.

A logistics hub for international air cargo, connecting Japan to the world

In 1966, IACT opened Japan's first consolidated import warehouse at Haneda Airport, establishing itself as a pioneer in air cargo handling with the motto of "Safety, Reliability, and Speed." Over the years, the company has earned high praise both domestically and internationally.

Today, leveraging its extensive experience in air cargo handling, IACT provides a comprehensive range of services, including ramp handling operations, airline documentation services, and export and Import warehouse operations, achieving a total air cargo service.

Asia

Europe

Globally Connected
Network

Narita

U.S.A





Our Cargo Warehouse Services

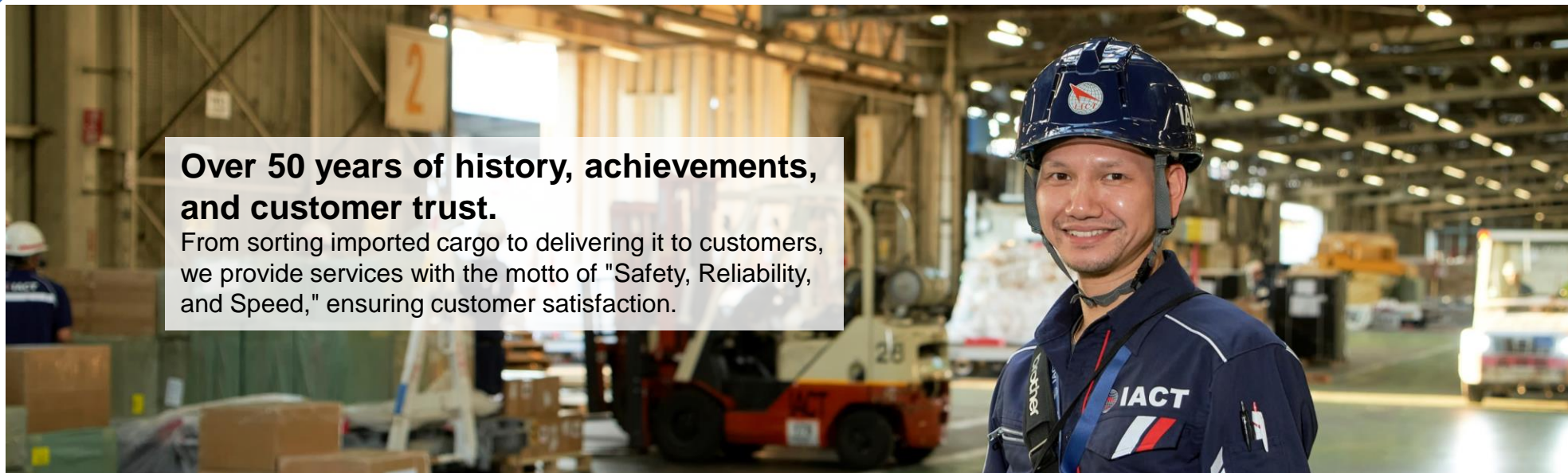
Introducing IACT's key warehouse operations, including the breakdown and sorting of import cargo, and the buildup of export cargo.



Import Cargo Handling Services

Over 50 years of history, achievements, and customer trust.

From sorting imported cargo to delivering it to customers, we provide services with the motto of "Safety, Reliability, and Speed," ensuring customer satisfaction.



Inbound Cargo (warehouse arrival)

Cargo unloaded from the aircraft is brought into the warehouse.



Cargo breakdown and sorting

Shipment loaded on Unit Load Device (ULD) is sorted by Air Waybill (AWB).



Shipment Check

Based on the pre-arrival information, arriving cargo and its condition is inspected. Any irregularities found are also reported.



Storage

Cargo is stored in appropriate facilities according to its specific characteristics.



Delivery

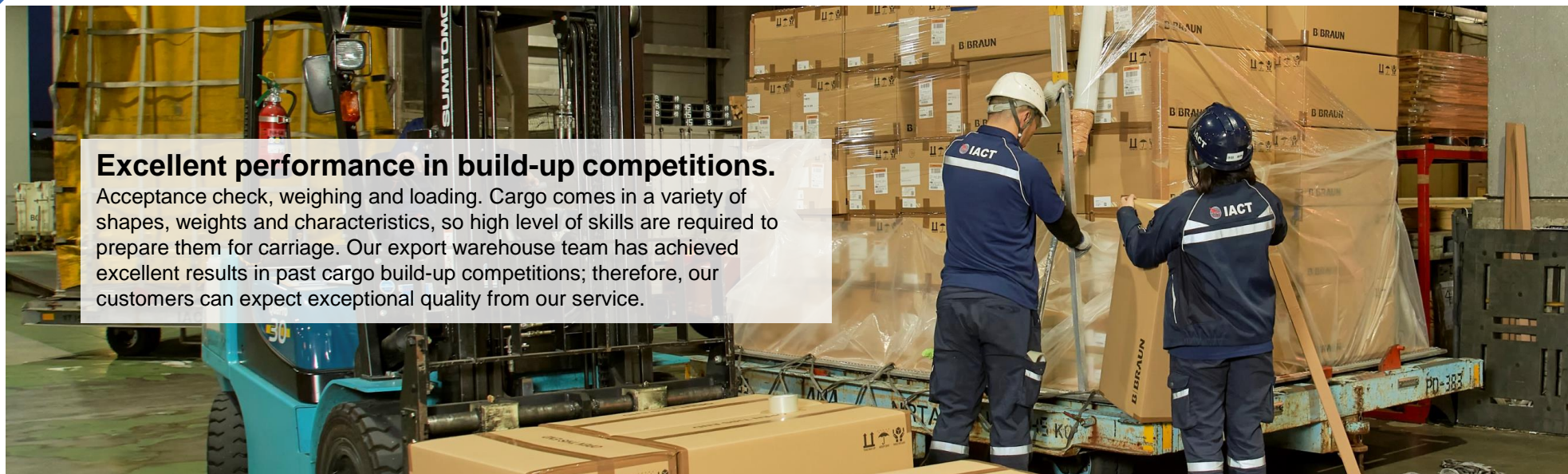
Cargo is delivered to the customer after import clearance.



Export Cargo Handling Services

Excellent performance in build-up competitions.

Acceptance check, weighing and loading. Cargo comes in a variety of shapes, weights and characteristics, so high level of skills are required to prepare them for carriage. Our export warehouse team has achieved excellent results in past cargo build-up competitions; therefore, our customers can expect exceptional quality from our service.



Cargo acceptance

Export permitted cargo is unloaded from the delivery truck. Shipment is accepted upon condition check.



Creation of loading plans

ULD build-up plan is created according to cargo weight, shape, and other characteristics.



Build-up

Forklifts are used to load shipment onto ULD.



Weighing

ULD is weighed and tagged. Detailed information on the weighed ULD is shared with operations personnel.



Cargo delivery

ULD is handed over to the ramp agent in preparation for loading onto the aircraft.



Import Documentation Services

Document support required for air transport.

Main duties include AWB pick-up upon the aircraft's arrival, sorting the documents, registering cargo information into the system, handing over documents to customers, and providing cargo arrival notifications.



Inbound document pickup

Cargo documents are retrieved from the aircraft upon arrival and brought over to the import documentation office.



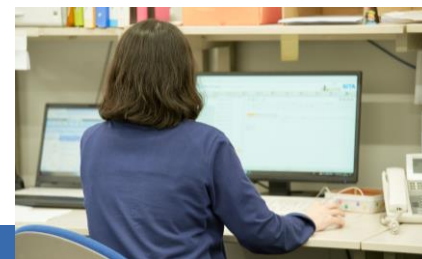
Processing import documents

Details are registered into the system and instruction is given to the warehouse team to store cargo in appropriate storage. Once all processes are completed, AWB is handed over to the customer.



Customer service

Customers are informed on the arrival of their cargo. For any shipment requiring temperature control, storage instructions are confirmed with the customs agent.



Irregularity handling

When irregularities such as missing pieces or damages occur, Airline system is used to trace the shipment's past handling records.



Other Cargo Related Services



International Express Cargo Handling

We handle international courier and express service such as small packages. With the increasing demand for e-commerce, we provide support for our customers' door-to-door delivery service.



Forwarder Export Handling Services

In addition to handling cargo in the warehouse, we also provide export services for forwarders such as screening, packaging, labeling, and re-icing perishables. As we are located inside the airport, we can handle urgent matters.



IAC Narita Logistics Center Services

As an AEO-accredited operator in an off-airport facility located in the southern airport district, this facility offers export and import cargo handling for shippers, consolidators and airlines. Operational support to logistics providers is also provided.



Our Ramp & Passenger Services

Presenting IAC's second core service: ramp and passenger handling operations. Through swift and safe high-quality handling, we connect both cargo and passengers to the world.





Ramp Handling Services

High-quality services borne from experience and proven track record

We provide high quality services to connect Japan and the world by smooth handling various types of aircraft of all sizes.



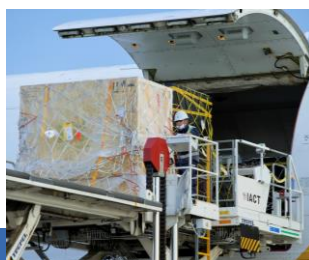
Marshalling

Aircraft guidance to tarmac.



Baggage handling

Sorting of arriving baggage, and loading departing baggage into containers.



Loading/ Unloading

Arriving baggage and cargo is unloaded from the aircraft before departing baggage and cargo is loaded.



Transport

Baggage and cargo is transported between aircraft and passenger or warehouse terminals.



Pushback

The aircraft is sent to the taxiway for takeoff by our pushback tractor.



Cabin cleaning

For the comfort of our passengers, cabin cleaning is provided.



Passenger Handling Services

Welcoming you with a spirit of hospitality.

Our courteous staff provides check-in, baggage acceptance, boarding announcements, and arrival procedures at the passenger terminal. We welcome each customer with a spirit of hospitality to ensure they have a pleasant journey.



DEP

ARR



Check-in Counter

Passenger's boarding pass, passport and other departure documents are checked, and baggage is checked in.



Departure Gate

Departing passengers are guided to the aircraft.



Arrival Gate

Passengers are guided upon arrival.



Wheelchair Support

Assists passengers with physical disabilities to board and disembark from the aircraft.

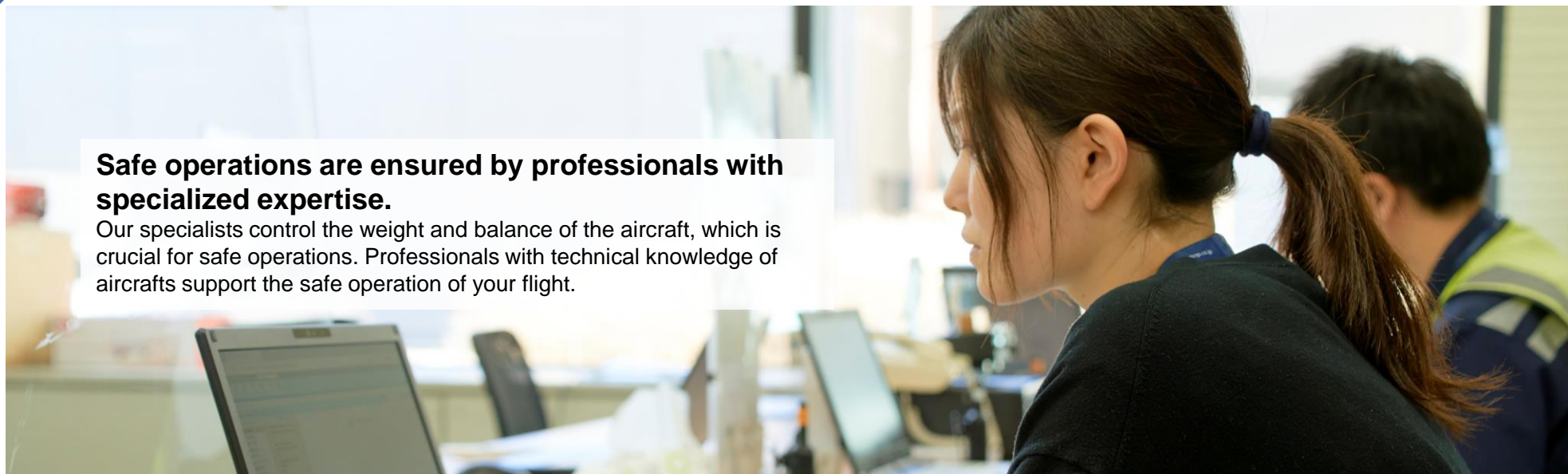




Flight Operation Services

Safe operations are ensured by professionals with specialized expertise.

Our specialists control the weight and balance of the aircraft, which is crucial for safe operations. Professionals with technical knowledge of aircrafts support the safe operation of your flight.



Weight & Balance

The number of passengers, the weight of their luggage, and cargo weights are calculated to create a ULD loading plan for the aircraft.



Communication with Aircraft

Communication with aircraft before arrival and after departure.



Handling of Flight Operation Documents

Documents necessary for the flight operation, such as the flight plan to the arrival airport, are prepared for delivery to the flight crew.





Facilities

It is not just our staff who support the quality of our handling services every day. Our facilities, vehicles, and equipment also function in unison to meet our customers' needs in the best manner.



Special Facilities Owned by IACT

Cargo Climate Control Terminal (CCC)

Feb.2024

In February 2018, we began operating Narita Airport's first Cargo Climate Control Terminal (CCC) with five temperature zones. This has made it possible to thoroughly control temperature using the chemical storage. Furthermore, in November 2020, we received IATA CEIV Pharma certification, a quality certification for air transport of pharmaceuticals. We provide higher quality transportation services by acquiring certification that comprehensively meets the pharmaceutical storage and transportation standards of various countries.



Cool room (+5°C) : 920㎡
Main Cargo : Fruits, Vegetables, Cheeses, etc



Temperature controlled room (-20°C) : 435㎡
Main Cargo : Frozen foods, Pharmaceuticals, etc



Temperature controlled room (+1°C~+20°C) : 993㎡
Facilities for warehousing, cargo handling, content inspection,



Pharma room 1 (+15°C~+25°C) : 97㎡ / Pharma room 2 (+2°C~+8°C) : 44㎡
Main Cargo : Pharmaceuticals, etc

Other Facilities & Equipment

Feb.2024



Medium-range Temperature room (+15°C~+19°C) : 161㎡
Main Cargo : Vegetables, Cut flowers etc.



Fumigation Facility : 466㎡
Function : Extirpate/sterilize disease and pest from agricultural products



20 feet pit scale
scale : 20ton



20 feet lifter
Main Cargo : Unit Load Device (ULD)



Forklifts 140 cars
1.5 ton, 3 ton, 4 ton, 10 ton, 15 ton

VAL room : 88㎡ Avi room : 19㎡ Semi-VAL room : 22㎡ Dangerous goods room : 22㎡



Ground Services Equipment (GSE)

Here is an introduction to our ground support equipment that ensures the quality of our ramp handling services.





Vehicles and Equipment Owned by IACT GSE : Ground Service Equipment

.2024.Oct



6 Towing Cars

A vehicle for towing an aircraft



9 Main Deck Loader

A vehicle for loading and unloading ULD from a freighter aircraft's main deck



9 High Lift Loaders

A vehicle for loading and unloading ULD from an aircraft's lower deck



10 Belt Loaders

A vehicle for loading and unloading bulk cargo and baggage from an aircraft's bulk cargo bay



55 Towing Tractors

A vehicle for towing ULD dolly and bulk cart



575 Pallet Dolly

Equipment for transporting ULDs



88 Bulk Carts

Equipment for transporting bulk cargo and passenger baggage



9 Passenger Boarding Steps

A vehicle for crew and passenger access to an aircraft



4 Deicing car

A Vehicle for the removal of snow and ice from an aircraft



1 Air Start Unit

Equipment for starting aircraft jet engines



2 Lavatory Service Cars

A vehicle for extracting wastewater, such as from aircraft lavatories, and transporting it to a treatment facility.



2 Water Cars

A vehicle for supplying drinking water to an aircraft



19 Tow Bar

Stick-like equipment for connecting an aircraft to a towing car



Our Company's CSR Activities (What is CSR?) Corporate Social Responsibility

We contribute to 'building a better society' through sustainable CSR activities.

Designated as a 'Regional Future Driving Company' by the Ministry of Economy, Trade and Industry, our company is committed to revitalizing local communities by supporting various regional activities.

Our Approach and Commitment to CSR

As a company operating within Narita International Airport, we have supported Japan's gateway since the airport's opening, providing essential services even in times of disaster as part of our commitment to social contribution. Through these activities, we have come to recognize that a corporation is also an integral member of society.

In recent years, CSR has become a major trend, and we see it as our corporate duty to contribute to the local community. This responsibility extends to acting responsibly toward all stakeholders, enhancing motivation within our business, and improving customer satisfaction. With this in mind, we have actively launched CSR initiatives to fulfill our role in supporting the community.

Our Initiatives as a Regional Future Driving Company

Our company has engaged in various community activities, including volunteer cleaning efforts within the airport and Narita City, sponsoring a youth baseball tournament for lower elementary school students in Narita, and hosting educational tours for local middle school students. In 2020, we were selected as a 'Regional Future Driving Company' by the Ministry of Economy, Trade and Industry, which has encouraged us to expand our activities, such as participating in local events and contributing to the broader Hokusō region. Our CSR efforts have only just begun, but we are committed to further contributing to the local community and working towards regional revitalization, with the ultimate goal of building a better society.



地域未来牽引企業



IACT Cup

Since 2018, our company has sponsored the youth baseball tournament for lower elementary school students in Narita City, supporting the event under the name 'IACT Cup.'



Sponsorship of Narita City Events

Various festivals and events are held annually in Narita City, and as a local company, we actively participate by providing sponsorship, assisting with venue organization, cleanup, and other operational support, thereby fostering connections with the community.



Beautification Activities Around Narita City

Our employees participate annually in cleanup events around Narita International Airport and adjacent areas, engaging in activities such as picking up litter to help maintain the beauty of the local environment.



Important Events of Company History



Fujii Airport Service Co., Ltd.



IACT facility at the time of Narita Airport opening

1960	—	Oct. 1963	Company Founded as Fujii Airport Service Co., Ltd.
	—	Dec. 1964	Company name changed to International Airport Cargo Terminal Co., Ltd. , abbreviated as IACT
	—	Dec. 1965	Designated by AOC as the operator of a joint import warehouse at Haneda Airport
	—	Nov. 1966	Began operation of a joint import warehouse (bonded area) at Haneda Airport
1970	—	May. 1978	Narita International Airport opened; established Narita Operations Headquarters Began operation of a joint import warehouse (bonded area) at Narita International Airport
1980	—	Aug. 1982	Began export cargo consolidation operations
	—	Nov. 1986	Opened expanded import joint warehouse at Narita International Airport
1990	—	Aug. 1993	Opened newly constructed import joint warehouse at Narita International Airport
	—	Apr. 1996	Opened Cargo Building No. 4 bonded warehouse at Narita International Airport
	—	Mar. 1998	Relocated joint warehouse at Haneda Airport to the East Cargo Area
2000	—	Jun. 2002	Opened Cargo Building No. 6 bonded warehouse at Narita International Airport
	—	Nov. 2002	Closed joint warehouse at Haneda Airport
	—	Oct. 2003	Opened IACT Airport South Center
	—	Mar. 2008	Opened IACT Narita Logistics Center
	—	Oct. 2008	Began import airline handling operations
	—	Nov. 2009	Began export warehouse and export airline handling operations
2010	—	Oct. 2010	Launched ramp and passenger handling services
	—	Mar. 2011	Recognized by Tokyo Customs as an AEO Designated Bonded Warehouse (IACT Narita Logistics Center registered as a bonded warehouse)
	—	Nov. 2016	Celebrated 50th Anniversary
	—	Feb. 2018	Opened Cargo Climate Control warehouse (CCC) at Narita Airport
2020	—	Nov. 2020	Obtained CEIV Pharma certification for quality assurance in pharmaceutical transportation



Board Members

Top Message

Since the beginning of the 21st century, we have aimed to enhance efficiency and quality in our operations by implementing warehouse systemization, launching a temperature-controlled warehouse, obtaining CEIV Pharma certification, and expanding into new service areas. To meet the diverse needs of airlines, we have actively expanded into off-airport warehouse services, export warehouse operations, airline document handling, ramp handling, and passenger counter services.

As a result of this steady business expansion, we were selected in 2020 by the Ministry of Economy, Trade and Industry as a 'Regional Future Driving Company' for our potential to play a central role in the regional economy. In 2024, we will begin operating a new facility equipped with automated high-rise racks and automated forklifts. Under the 'New Narita Airport' concept, we will continue to support the development of Narita International Airport as essential infrastructure, while also contributing to the revitalization of the surrounding region through local employment promotion and CSR activities.

With our 60th anniversary approaching in 2026, we are committed to fostering each employee's growth as a professional and to providing efficient, high-quality services that satisfy our customers, built on strong teamwork. We will continue to uphold our legacy as a pioneer in joint warehouse operations while adapting to changes in a new era, pursuing self-improvement, and striving to contribute to the advancement of international exchange.

Thank you for your continued support.

President, Hiroshi Kishimoto



2024, Sep

Post	Name	Responsibility
Chairman of the board	Eiichi Okamoto	Operation Reform Promotion/Chairman of ICS Co., Ltd. Chairman of Skyport Service Corporation
President	Hiroshi Kishimoto	Corporate Administration
Senior Managing Director	Ryuichi Maekawa	Interdepartmental Cordination/Internal Audit/General Affairs Department General Accounting Department/IT Developing Office
Managing Director	Keiji Watanabe	Import Operation Department 2
Director	Fuminori Kawaguchi	Corporate Planning Department/Department of Ramp & Passenger Handling Services
Director	Masanori Otake	Marketing & Sales Department/Operation Control Department President of ICS Co., Ltd.
Director	Seiji Iijima	Import Operation Department 1/Import Documentation Handling Department IACI Narita Logistics Center/Haneda Branch
Director	Masayuki Kida	Export Operation Department/Facility Department
Auditor	Yoshikazu Tsurumaki	
Executive Officer	Makoto Kiuchi	President of Skyport Service Corporation
Executive Officer	Yoshiki Takagi	Manager of Import Operation Department 1



IACT Customer Airlines

Mar.2025

	AIRLINE	IMPORT CARGO HANDLING	EXPORT CARGO HANDLING	DOCUMENT HANDLING	RAMP HANDLING	PASSENGER SERVICES	NOTE
3S	Aero Logic	●	●	●	●	-	-
5J	Cebu Pacific	●	●	●	-	-	At NGO
5Y	Atlas Air	●	●	●	●	-	-
7C	Jeju Air	●	●	●	●	-	-
7L	Silk Way West Airlines	●	●	●	●	-	-
AF	Air France	●	●	●	-	-	-
KL	KLM Cargo	●	●	●	-	-	-
BA	IAG Cargo	●	●	●	-	-	RFS
IB	IAG Cargo	●	●	●	-	-	-
BR	Eva Air Cargo	●	-	●	-	-	-
CF	China Postal Airlines	●	●	●	●	-	-
CP	MSC AIR S.p.A	●	●	●	●	-	-
CX	Cathay Pacific Cargo	●	●	●	●	-	-
ET	Ethiopian Airlines	●	●	●	●	●	-
FX	FedEx Express	●	●	-	-	-	-
HB	Greater Bay Airlines	●	●	●	●	●	-
HY	Uzbekistan Airways	●	-	●	-	-	-
HZ	Aurora	-	-	-	●	●	-
I9	Central Airline	●	●	●	●	-	-
IT	Tigerair Taiwan	●	●	●	●	●	At NGO
K4	Kalitta Air	●	●	●	●	-	-
KJ	Air Incheon	●	●	●	-	-	-
KZ	Nippon Cargo Airlines	-	●	-	-	-	Partial Handling
LD	Air Hong Kong	●	●	●	●	-	-
LH	Lufthansa Cargo	●	●	●	-	-	-
LX	Swiss International Air Lines	●	●	●	-	-	-
LY	EL AL Israel Airlines	●	●	●	-	-	-
M0	Aero Mongolia	●	●	●	-	-	-
MS	EgyptAir	●	●	●	●	-	-
NH	All Nippon Airways	●	-	●	-	-	-
NX	Air Macau	●	-	●	-	-	RFS
O3	SF Airlines	●	-	●	-	-	RFS
OS	Austrian Airlines	●	●	●	-	-	-
OZ	Asiana Airlines	●	●	-	●	-	-
PO	Polar Air Cargo Worldwide	●	●	●	●	-	-
QR	Qatar Airways	●	●	●	-	-	-
RA	Nepal Airlines	●	●	●	●	●	-
RS	Air Seoul	●	●	●	●	●	-
SC	Shandong Airlines	●	-	●	-	-	-
SK	Scandinavian Airlines	●	-	●	-	-	RFS
SL	Thai Lion Air	●	●	●	-	-	-
TK	Turkish Airlines	●	●	●	●	-	-
TN	Air Tahiti Nui	●	●	●	-	-	-
TW	T'way Air	●	●	●	●	-	-
UA	United Airlines	●	●	●	-	-	-
UL	SriLankan Airlines	●	●	●	●	●	-
UO	Hong Kong Express Airways	●	●	●	-	-	-
VJ	Vietjet Air	-	-	-	●	-	-
VN	Vietnam Airlines	●	●	●	-	-	-
WS	WestJet Airlines	●	●	●	-	-	-
Y8	Suparna Airlines	●	-	●	-	-	RFS
YP	Air Premia	●	●	●	-	-	-
ZE	Eastar Jet	●	●	●	●	-	-
	TTL	49	43	47	26	7	-

RFS : Road Feeder Service



Bonded area per facility	
Warehouse	Area(m²)
Import Common Warehouse Bldg. (Bldg. A)	22,027.00
No.4 Cargo Bldg. Room No.108 (Bldg. B)	9,646.52
No.8 Cargo Bldg.	21,834.29
No.6 Cargo Bldg. (Bldg. D)	5,714.17
No.1 Cargo Bldg. Room No.105(Bldg. E)	1,565.46
No.2 Cargo Bldg. Room No.103-B,104,106(Bldg. F)	3,815.20
No.1 Cargo Bldg. Room No.103,104,108-2 (Bldg. G)	5,338.61
No.1 Cargo Bldg. Room No.106(Bldg. H)	2,108.10
No.4 Cargo Bldg. Room No.105(Bldg. I)	5,596.56
Cargo Climate Control Terminal(CCC)	3,185.29
Fumigation Facility	465.67
Others	1,813.16

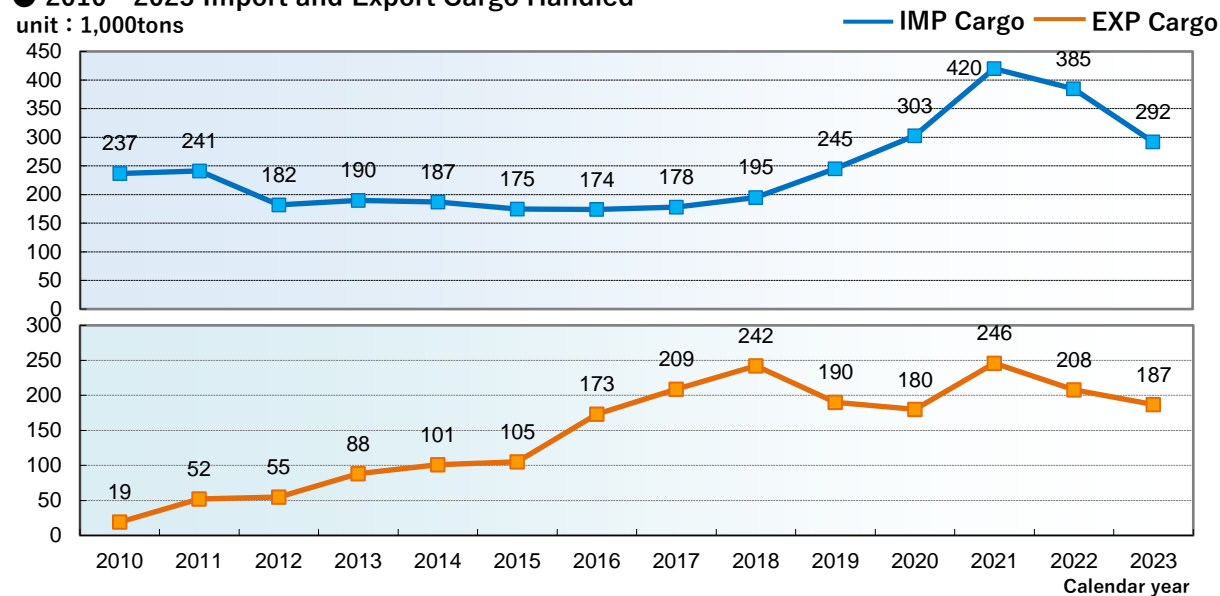




Cargo Handling Results by IACT

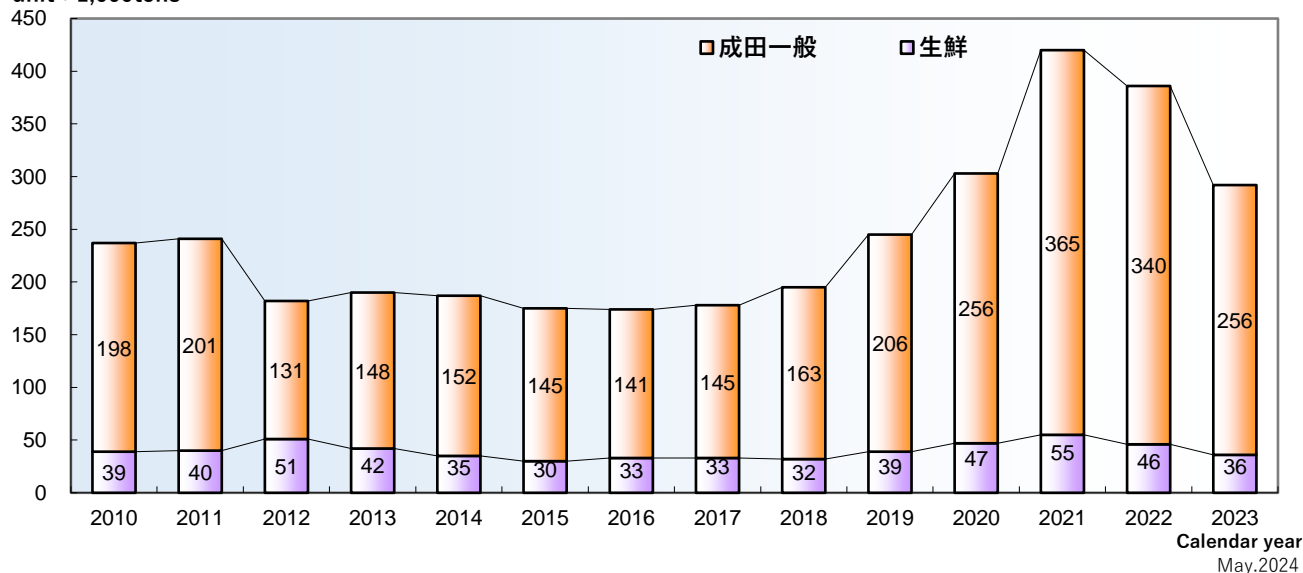
● 2010 - 2023 Import and Export Cargo Handled

unit : 1,000tons




● 2010 - 2023 Breakdown of Import Cargo Volume

unit : 1,000tons



Company Name	International Air Cargo Terminal Co., Ltd.	
Operation Started	November, 1966	
Capital	300 million Yen	
Category of Business	International Air Cargo Handling, Surface Transportation of Cargo	
Location	【Head Office】	【Narita Operation Headquarters】
	Keio Higashi Nihonbashi Bldg., 5F, 1-1-7, Nihonbashi Chuo-ku, Tokyo, 103-0004, Japan	Import Common Warehouse Bldg., Narita International Airport, Narita-city, Chiba, 282-8691, Japan
Location	【Haneda Office】	【IACT Narita Logistics Center】
	No.474 No.1 International Freight Bldg., 2-6-3 Haneda Airport, Ohta-ku, Tokyo 144-0041, Japan	Iwayama Aza Imorito 114-7, Sanbu-gun, Shibayama-machi, Chiba, 289-1608, Japan
http://www.iactcgo.co.jp		

Affiliated Company

Company Name	ICS Co., Ltd. 
Operation Started	March, 1987
Capital	10 million Yen
Category of Business	Man-Power Supply, Customs-Broker
Location	【Head Office】
	No.1 Agency Bldg., Narita International Airport, Narita-city, Chiba, 282-8691, Japan
【Narita Customs Broker】	
No.2 Cargo Bldg. Rm 206, Narita International Airport, Narita-city, Chiba, 282-0021, Japan	
http://www.ics-narita.com	

Company Name	Skyport Service Corporation 
Operation Started	August, 2006
Capital	100 million Yen
Category of Business	Ground Handling Service
Location	【Head Office】
	International Warehouse #3 1-2 Centrair, Tokoname, Aichi 479-0081, Japan
http://www.skyport.co.jp	